

Mont Marte

How to paint Expressionist flowers



I can create

www.montmarte.net



© Mont Marte International Pty Ltd
CAN 101589897



Materials List

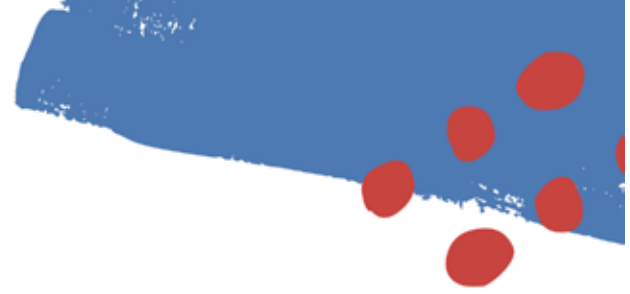
The materials for this lesson can be found at a Gold or above Art Centre.

Go to www.montmarte.net to find your nearest stockist.

- CMMD5060 Mont Marte Double Thick Canvas 50.8 x 60.9cm
- MAPL0002 Mont Marte Easy Clean Wood Palette
- BMHS0025 Mont Marte Gallery Series Brush Set
- BMHS0025 Mont Marte Gallery Series Brush Set
- PMDA0001 Mont Marte Dimension Acrylic Titanium White
- PMDA0013 Mont Marte Dimension Acrylic Magenta
- PMDA0022 Mont Marte Dimension Acrylic Cobalt Blue
- PMDA0029 Mont Marte Dimension Acrylic Sap Green
- PMDA0008 Mont Marte Dimension Acrylic Orange
- PMDA0009 Mont Marte Dimension Acrylic Azo Vermillion
- PMDA0010 Mont Marte Dimension Acrylic Brilliant Red
- PMDA0030 Mont Marte Dimension Acrylic Hookers Green
- PMDA0005 Mont Marte Dimension Acrylic Lemon Yellow
- PMDA0016 Mont Marte Dimension Acrylic Purple
- PMDA0031 Mont Marte Dimension Acrylic Olive Green
- PMDA0020 Mont Marte Dimension Acrylic Phthalo Blue

Also Required:

Water



1



1. Drawing up the outline

Refer to the image on page 6 and draw it onto the surface with a pencil. Use the following steps:

- 1) Use a ruler to draw a line for the base of the table.
- 2) Draw a rectangle for the vase and put curves in for the corners.
- 3) Use a ruler to draw in the back line of the table top.
- 4) Draw in the rough shape of where the foliage will lie.



Keep walking back to view your work from a distance to see how the colours are working together.

Mont Marte



2. Painting the flowers

Put the Dimension acrylic colours listed on page 2 onto an easy clean palette. To apply the paint I use a large brush and scoop up the paint and apply it in big dollops.

Keep brushes in colour groups to avoid excess contamination. For example, use a different brush for the whites, reds, greens, and blues and purples. When changing colours just wipe the excess paint off the brush and charge the brush.

In this type of painting style, a little colour contamination actually adds interest.

There isn't really any order to follow regarding how and when to apply the colours, but I put the greens in first to suggest the leaves near the top of the vase. I then applied the lighter tones like whites, followed by yellows to reds, and then purples to the dark blues. Keep randomly applying the colours until the area is filled.

The vase contains the same colours as the flowers but the paint is applied in thinner strokes and there is more greens and blues.

Check out the accompanying the video for more tips on colour application.

Mont Marte

3



3. Painting the background

The background is made up of 3 blocks of colour; the front of the table, the top of the table and the wall behind the flowers.

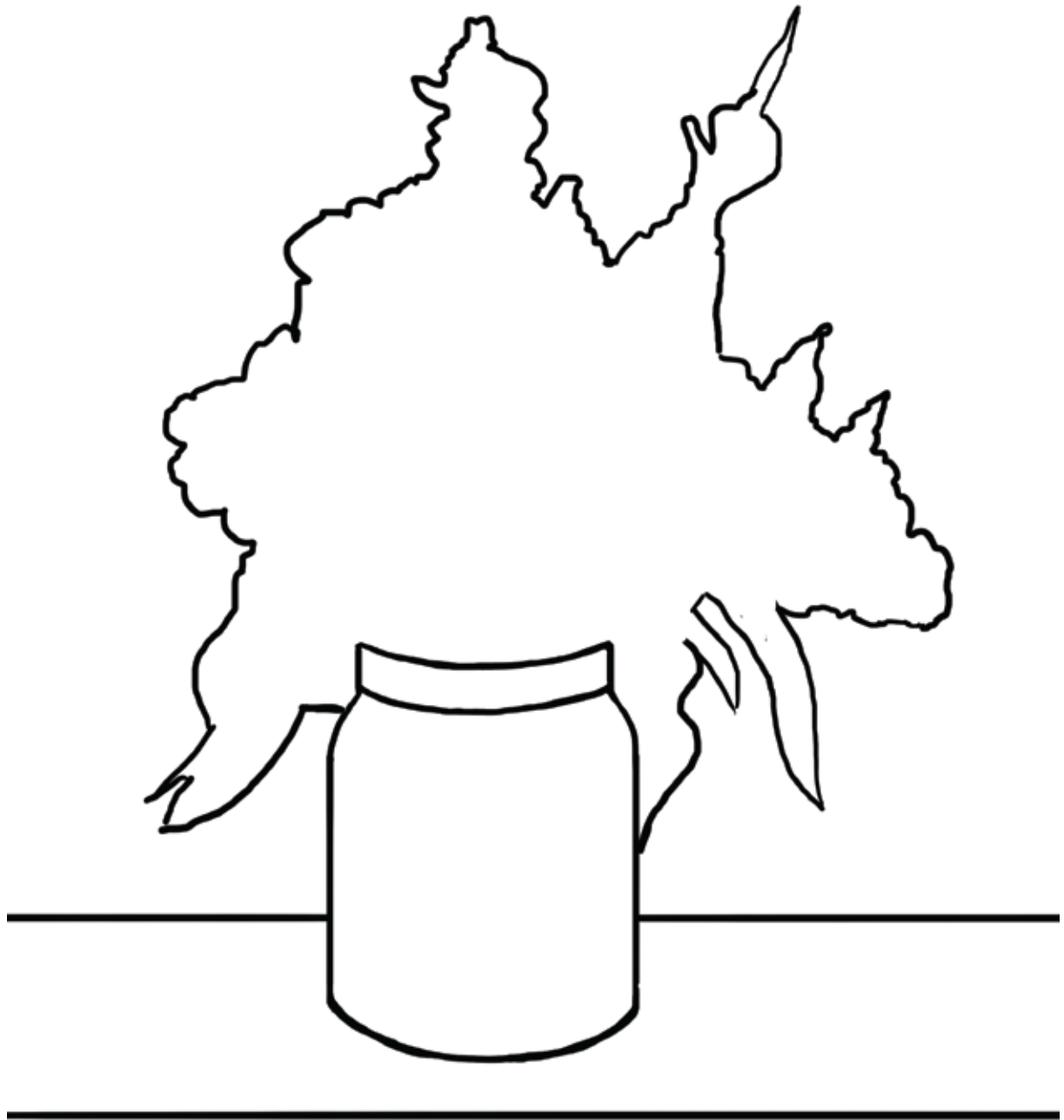
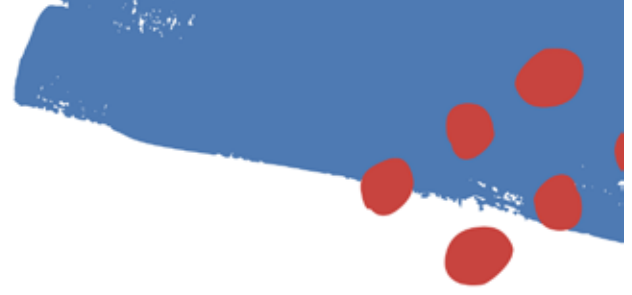
Start with the front of the table. Lay on some Paynes Grey and mix Titanium White into the grey on the canvas. Leave it slightly unmixed to give some interest. This will be the darkest grey.

Next scrub some Paynes Grey into the tabletop area to suggest some shadow cast from the vase. While this is drying, create a medium grey from Paynes Grey, a touch of Olive Green and Titanium White.. Scrub this into the background around the flowers.

Move across the canvas from left to right and add more white to lighten it as you go.

Lastly create a medium grey and paint this onto the table top. Don't take it into the shadow - instead just dry brush the edges.

Mont Marte



Mont Marte

