

Solstice Moon Painting



WHAT YOU NEED

CML4050
MPB0077
MAPL0003
MAMD0001

MONT MARTE CANVAS PANEL 40 X 50 CM
MONT MARTE OIL TAKLON FILBERT # 10
MONT MARTE DEEP WELL PLASTIC PALETTE
MONT MARTE ACRYLIC MEDIUM GLOSS

ACRYLIC PAINTS:

PMSA0017
PMSA0006
PMSA0002
PMSA0011

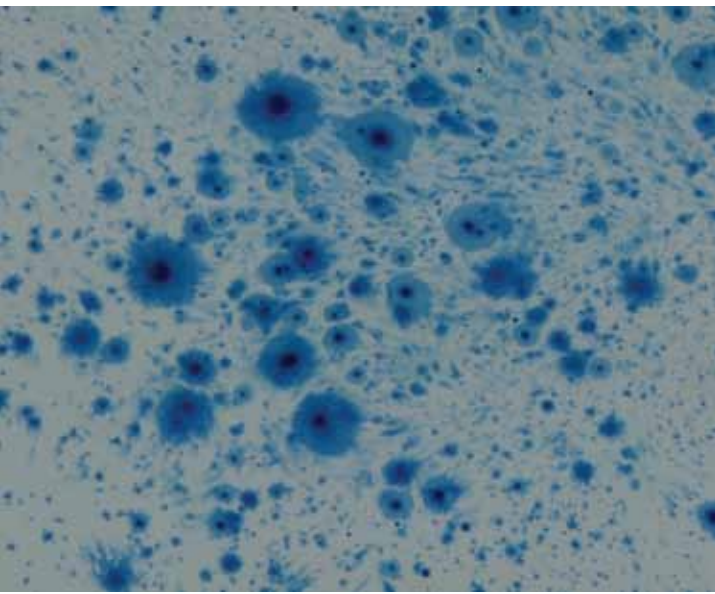
MONT MARTE CADMIUM YELLOW SILVER SERIES
MONT MARTE PHTHALO BLUE SILVER SERIES
MONT MARTE SCARLET RED SILVER SERIES
MONT MARTE LAMP BLACK SILVER SERIES

WATER SPRAY BOTTLE
WATER
OLD DINNER PLATE
ATOMISER
ROCK OR A BRICK

mont marte

WWW.MONTMARTE.NET





Step 1

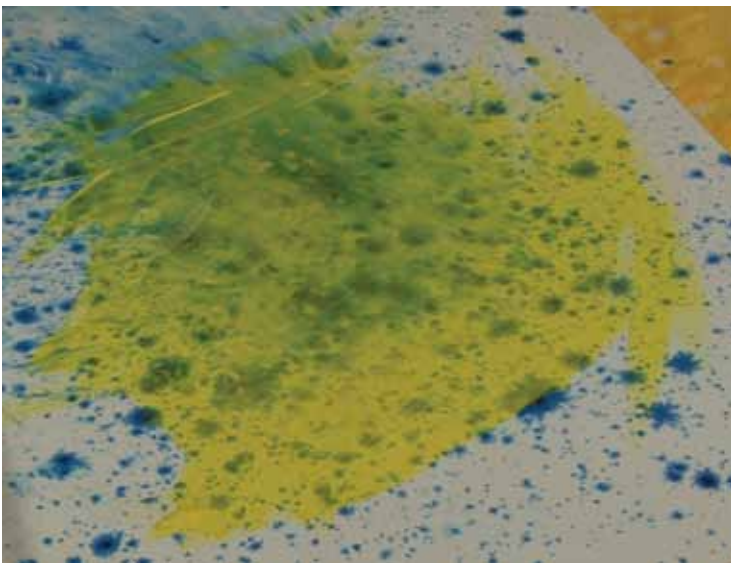
Under painting. Lay down some protective covering on your work surface. I have used old paper. Lay the canvas on the flat surface and give it a spray with some water. Then squeeze out 1/4 of the gloss medium onto the canvas and evenly spread it out with the # 10 brush. Squeeze out some Phthalo Blue into the palette and add an equal amount of water to it and give it a mix. Dip the brush into it and drop the paint into the surface. Try to ensure the droplets are quite small. Let this dry.

As soon as water is applied to the canvas drop in the paint mixture. The water will soak into the canvas and the paint will not 'bloom' if the surface is dry.

Joese Jem

Step 2

Top coating. Squeeze out some Cadmium yellow and mix it with some gloss medium to 1 part Yellow to 3 parts gloss medium. Paint the Yellow over the entire surface. Try to vary the strength of the colour so it's a little mottled. Let this dry.





Step 3

Creating the moon and the sky. The Acrylic Gloss Medium should be about 1/4 full of medium. Take the bottle and squeeze a small dollop into it. Give it a good shake. The resulting liquid should be the viscosity of milk. Place an Atomiser into the bottle and spray a line of colour across the canvas. Let this dry. Next place a dinner plate in the middle of the canvas and weight it with a rock. This will act as a mask. Now cover the rest of the canvas with this Red colour. Ensure the coat is mottled. Let this dry before removing the plate.



Step 4

Creating the tree silhouette. Squeeze out some Lamp Black and thin it with water to the Viscosity of milk. With the brush lay a large pool of paint at the bottom of the canvas and blow the paint across the surface. Try to imagine how a tree would grow and keep to that form. The paint will naturally thin out as you move out to the end of the branch. Tip the canvas so the paint runs in the appropriate direction.

...UNTIL NEXT TIME
KEEP ON CREATING

